



XY Residence

X and Y, residents of Sycamore Mews, have their hearts in Mumbai, India. A creative family of 4, X a blogger, Y a writer and kids who love reading. Designing a house for this family meant marrying Mumbai with London, whilst creating an environment to help breed creativity. In conversation with the couple, what struck us the most was, their connect with Mumbai and the fondness towards what this city had to offer. Having spent a good amount of time in this city what they reminiscent about is their memories back in Marine drive, Nariman point, Powai etc

Scene: London: Gloomy is what they think of the city which misses the color and order in chaos that Mumbai has to offer. Y, with an organised mind, set the tone for a modern house in her brief whereas X, a little more organic in his approach shared ideas which were more colourful and eclectic. Connecting the dots of their life and preferences, we let our creative juices flow and we thought, what better than, an **ART-DECO HOUSE**. Art-deco which is deeply rooted in forming most of the urban fabric of Mumbai and gives the city the character it possesses.

The house would comprise of integration of idiosyncrasies of Mumbai life with muted modernism with the use of bold geometric forms, bright colours, stand-out hardware, rounded corners and ribbed/fluted details.

The approach is bold right from the main door of the house where a bold jade green door is proposed with a striking brass handle and a patterned door mat. The living room is a fine amalgamation of rich materials, colors, textures and patterns on walls and furniture which provides an overall character to the space. The sofa, which is an existing piece, can easily co-exist with the vibrant environment created by the use of the arches and colors around. The dining and kitchen which are an extension to the living room, speak a similar character in the use of pattern but are subtler in terms of color in order to strike a balance with the living room.

The office for the couple is kept classy and clean with a bold study desk and lean shelving's for storage. Stylish yet comfortable chairs which bring in the art deco character have been introduced. The kids study is a good play of pastels and circular patterns that help set the mood of the space. The most important space of the house, the meditation room, is kept simple, clean and muted. A large dome with a skylight is proposed which creates a feel of infinity (inspired from the pantheon). To add to the purity and calmness of the space, a water body with floor seating is introduced. The master bedroom is a vibrant yet modern space with a balance of color, pattern and prints. The kids room is fun and cheerful with the use of shades of their favorite colour pink. The guest room vibe is an extension of the entire house with a bold headboard and subtle yet classy wardrobe and side tables.

The overall effort has been to keep the elements soft, bold, vibrant and modern which resonate with the Mumbai's colourful life and takes a piece of this city into what would make a humble abode for the Bhatia family

Design Narrative



Entry + Living + Dining



Entrance

Light



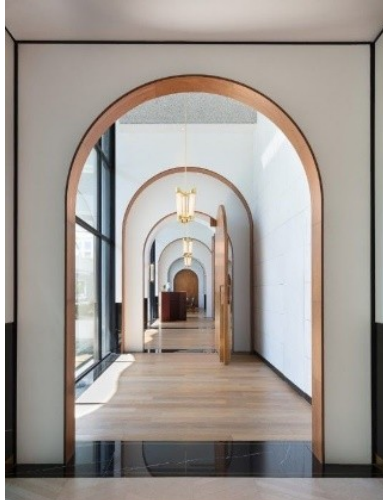
Handle detail



Door Mat

Living room

Staircase detail



TV Unit



Console



Lounge chair + footrest



Walls

Bar



Garden doors



Sofa + walls

Light s



Lounge chair + walls

Kitchen



Island counter



Hanging light



Flooring



Chair



Dining table



Dining Bench



Dining + Kitchen



Office + Study + Meditation room



Desk



Bookshelf



Table lamp

Study chair



Study chair



Doors



Overhead Storage

Adult Study



Low seating for study



Study desk



Storage



Study lamp

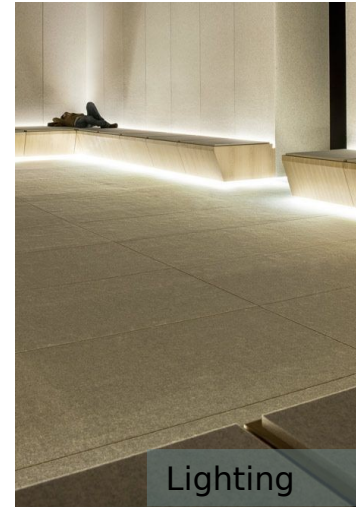
Kids Study



Ceiling + walls + floor



Ceiling + seating



Lighting



Asana seating



Water body



Seating idea

Meditation room



Bedrooms



Wardrobe



Mirror

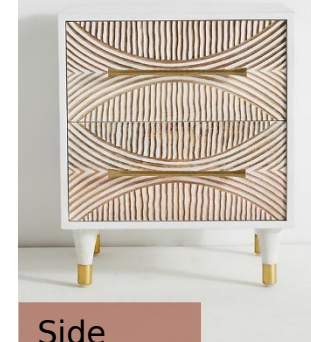
Headboard + look and feel



Lounge chair



Light



Side table

Master bedroom

Kids bedroom



Wardrobe



Overall look & feel



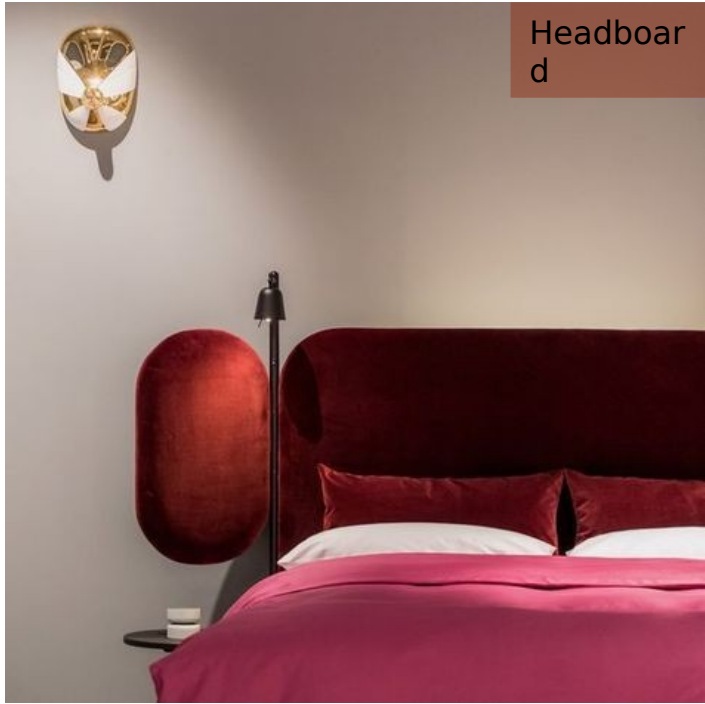
Rocking horse



Lights



Chair



Headboard



Wardrobe
Light



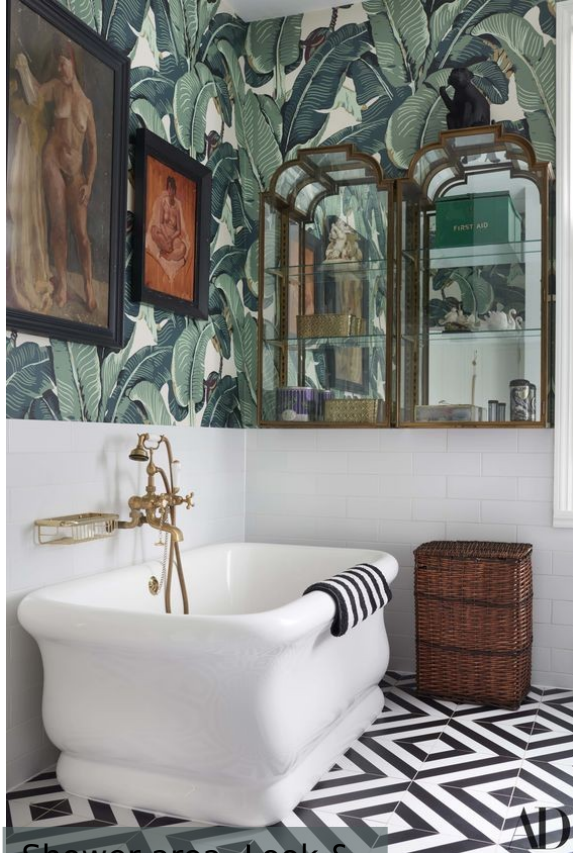
Side
table



Guest bedroom



Bathrooms



Shower area- Look & Feel



Dry area- Look & Feel



Light
s

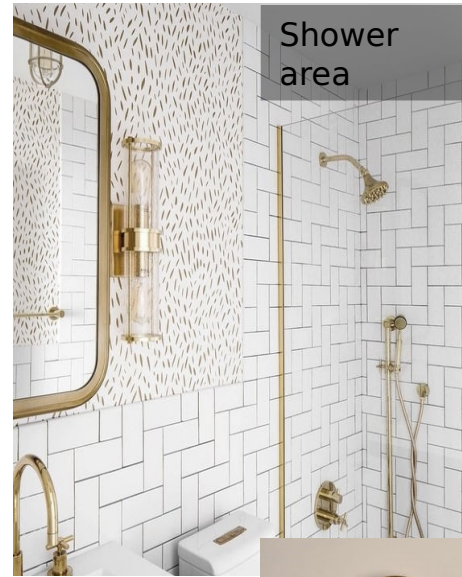
Mirro
r



Master bathroom (Op 01)



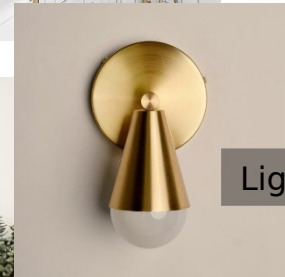
Look & Feel



Shower area



Vanity



Light

Master bathroom (Op 02)



Shower area- Look & Feel



Dry area- Look & Feel



Flooring

Guest bathroom



Look & Feel



Lights

Powder bathroom